

CAT BOARDING

A separate cattery area provides the privacy that cats want and deserve. Each cat has its own condo area and only cats reside in this room.

- Clean litter boxes are provided for each cat.
- Your cats can have their own bed, cushion or toy if desired.
- Families with two cats may prefer them to share a larger condo.

MEDICAL REQUIREMENTS



For your pet's protection, proof of current vaccinations is required. New customers should bring vaccination information from their veterinarian's office.

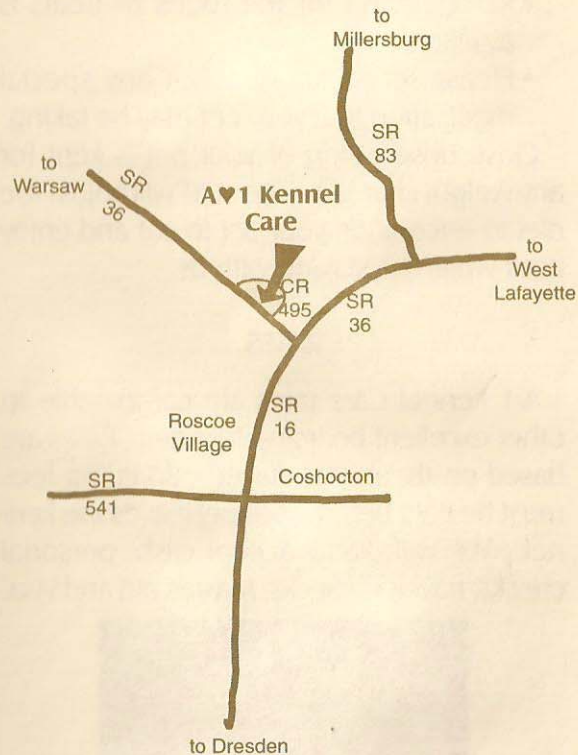
- Dogs must be current for rabies, DHLPP/C (distemper, parvovirus, and coronavirus), and kennel cough.
- Cats must be current for rabies, FVRCP (distemper), and leukemia.

VETERINARY SERVICES

Veterinary procedures should be completed prior to boarding. Veterinarians from A-1 Vet Care Inc. can handle all your needs. If your pet develops diarrhea or an illness while boarding with us, we will contact you and start the necessary medication to allow them to recover. Please leave a forwarding telephone number to allow us to contact you.

A♥1 Kennel Care

46809 C.R. 495
Coshocton, Ohio 43812
740-622-4420

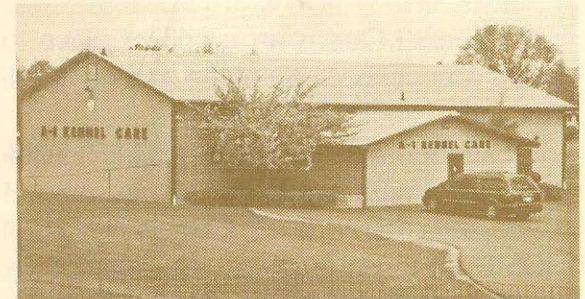


A♥1 Kennel Care Hours

Drop Off and Pick Up

Mon.-Sat.	7:00 - 9:00 A.M. 4:00 - 6:00 P.M.
Sun.	4:00 - 5:00 P.M.

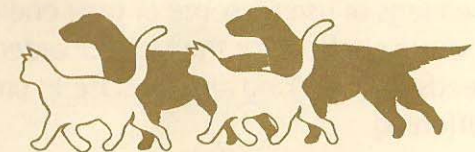
A♥1 Kennel Care

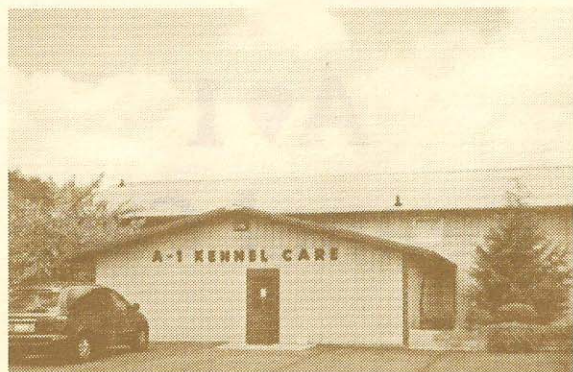


A♥1 Kennel Care

46809 C.R. 495
Coshocton, Ohio 43812

740-622-4420





"Home Away From Home"

A-1 Kennel Care is an excellent place to board your pet because of the superior facilities and its dedicated staff.

A-1 Kennel Care has established the healthiest environment possible to assure your pet a safe and comfortable "HOME AWAY FROM HOME". Personal attention is just part of the care given to your pet. The TLC (Tender Loving Care) program allows for special time for your pet to be exercised, to play, be brushed or just be loved. If you desire, your pet can have their bed, a favorite toy, and a blanket with them.

TENDER LOVING CARE (TLC)

TLC is for any pet that enjoys special attention. This is a special time to be exercised, go for a run or a relaxing walk, be brushed and combed, or a little hugging by our dedicated staff. TLC is great for reassuring newcomers, perfect for the pampered pet, and terrific for the active pets who need to stretch their legs or use up some of their energy. It is very beneficial for the older boarder who needs daily walking and exercise to prevent stiffening.

FEEDING

A-1 Kennel Care feeds in the morning and in the evening. This allows your pet ample time to digest their food prior to their next meal.

- Most boarders bring the food that they are used to and they receive a discount for this. We furnish Science Diet foods for all other boarders.
- Prescription foods from Hill's are available for those pets that require them.
- Refrigeration for the foods or treats is available.
- Please let us know about any special medication that your pet may be taking.

Close observation of your pet is kept for any weight changes. The staff will adjust the diet to encourage your pet to eat and enjoy itself while it is staying with us.

RATES

A-1 Kennel Care rates are comparable to other excellent boarding facilities. Rates are based on the nights stayed. Boarding fees must be paid before your pet leaves the kennel. We will gladly accept cash, personal checks, travelers checks, Mastercard and Visa.



THE KENNEL

Our facility offers suites in a climate-controlled environment. The suites are painted a sunny yellow color. Most pets like to see who else is staying in the adjacent suites. They are kept separate to ensure their safety and privacy. Families with two dogs may prefer them to share a larger suite.

- You can choose between the 4' by 4' suite or one that is connected to a 4' by 10' indoor run.
- Indoor suites and run areas have daily maid service.
- With the climate-controlled environment, our boarders never have to go out in the rain, snow or cold, though some may prefer to exercise in our outside play area.
- During the summer, the kennel has air conditioning and fans circulate cooler air.
- In the winter, the facility has warm water circulating in the floor. This makes the floor "warm to the touch" and pets love to lay on the heated floor.

